

# ADS-1600W

**brother**  
at your side



## Mobile 2-Sided (duplex) Document Scanner

With the ADS-1600W scanning, organising and sharing information with multiple users is simple.

True wireless scanning straight to your mobile device or to the cloud combined with intelligent software allows your information to go further.

- 2-Sided (duplex) scanning in a single pass
- 6.8cm LCD touchscreen
- Built-in wireless connectivity
- Scan your documents directly to the cloud or mobile device
- Plastic ID card slot
- Compatible with Windows® and Mac
- Professional software suite included

# Fast. Efficient.

## Intelligent scanning at your fingertips

The ADS-1600W boasts a wide range of features designed to make your day more efficient and productive. When combined with the included powerful software suite, the ADS-1600W can easily scan, share and organise your documents for easy retrieval of important information.



6.8cm LCD touchscreen

Compact

2-Sided (duplex)  
Scanning

USB Powered

## Product features:

### High quality

- Up to 600 x 600 dpi
- Auto image rotation (if page placed upside down)
- Auto de-skew (corrects documents scanned out of line)
- Auto crop
- Background colour removal
- Blank page detection & removal

### Compatibility

- The supplied TWAIN, WIA & ISIS drivers allow seamless integration into various document management systems

### Easy to use

- 6.8cm LCD touchscreen including web connect enables scanning directly to popular cloud storage solutions
- 20 page Automatic Document Feeder (ADF)
- Built-in wireless connectivity allows multiple users to share the device

### Compact and flexible

- Compact dimensions 285(W) x 103(D) x 84(H)mm
- 2-Sided (duplex) scanning
- Scan anything from business cards, plastic ID cards, photographs, receipts and up to A4 2-Sided (duplex) documents

### Fast and efficient

- Single sided scan speed up to 18ppm (pages per minute) in monochrome and colour
- 2-Sided (duplex) scan speed up to 36ipm (images per minute) in monochrome and colour
- Scan to various destinations including: image, e-mail, e-mail Server, file, OCR, Network, FTP, USB flash memory, cloud and SharePoint®1
- Dedicated plastic ID card slot

### Scan directly to the cloud

- PC-free scanning straight to the cloud for easy sharing and storage. Everyone within your organisation can then access the information even on their mobile devices.

## The bundled suite of software includes:

The ADS-1600W is bundled with powerful software to become the perfect solution for document management and improved workflow, helping you to access and retrieve documents whilst away from the office. Share documents to improve communication and collaboration, cutting down the amount of paper you have to travel with.

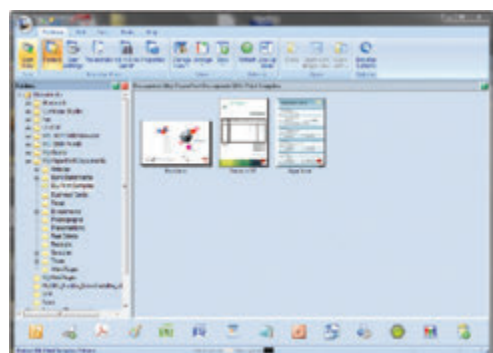
### **Nuance™ PDF Converter Professional 8**

Allows users to improve the way they create, convert, securely share PDF files and collaborate.



### **Nuance™ PaperPort™ 12SE (Windows®)**

Powerful document management, editing and PDF creation program with connector for Microsoft® SharePoint®.



### **NewSoft® Presto!® PageManager 9 (Mac)**

Scan and organise digitised files. View, edit, e-mail or save files as searchable PDF, HTML, RTF, or TXT files.

### **NewSoft® Presto!® BizCard 6 (Windows® and Mac)**

Scan and export editable contact information directly to Microsoft® Outlook® and other contact management systems.

### **Control Center 4 (Windows®) / Control Center 2 (Mac)**

Brother Control Center enables you to customise your settings to make scanning your documents more efficient.

*“This scanner packs many features into such a small, compact design”*



# ADS-1600W

Compact Document Scanner that offers high speed 2-Sided (duplex) scanning with wireless connection and 20 page Automatic Document Feeder (ADF). Scan a wide range of documents including ID Cards. Scan and send your documents wirelessly without the need to connect the machine to your PC.



## Scan

Scan your documents into searchable PDF files.



## Archive

Archive your documents using the powerful bundled software.



## Search

Quickly and easily retrieve your documents for editing, viewing, sharing or printing.

## Technical Specifications

General		Software for Windows <sup>6</sup>	
Scanner Type	Automatic document feeder (ADF), automatic 2-Sided (duplex) scanning	Brother Control Center 4	Easy to use scan software from Brother
Scanning Modes	Colour, greyscale & monochrome	NewSoft <sup>®</sup> Presto! BizCard <sup>®</sup> 6	Global business card management solution
Image Sensor	2 x CMOS dual CIS (contact image sensor) 1 x front and 1 x rear to enable single pass 2-Sided (duplex) scanning	Nuance <sup>™</sup> PaperPort <sup>™</sup> 12SE	Powerful document management, PDF creation and editing, including connector for Microsoft <sup>®</sup> SharePoint <sup>®</sup>
Interface	Hi-Speed USB 2.0, Wireless 802.11b/g/n	Nuance <sup>®</sup> PDF Converter Professional 8	Powerful PDF creation and management software
Wireless Setup	WPS, AOSS	<b>Software for Mac</b>	
Wireless Security	WEP 64/128 bit, WPA-PSK (TKIP/AES), WPA2-PSK (AES)	Brother Control Center 2	Easy to use scan software from Brother
Display	6.8cm colour touchscreen	NewSoft <sup>®</sup> Presto! BizCard <sup>®</sup> 6	Global business card management solution
Scanning		NewSoft <sup>®</sup> Presto! <sup>®</sup> PageManager <sup>®</sup> 9	Document management & sharing program
Standard Colour & Mono Scan Speed	Up to 18ppm (pages per minute) A4 up to 300 dpi	<b>Paper Handling</b>	
2-Sided (duplex) Colour & Mono Scan Speed	Up to 18ppm (pages per minute), 36ipm (images per minute) A4 up to 300 dpi	Paper Input	Up to 20 sheets
Optical Scan Resolution	Up to 600 x 600 dpi (dots per inch)	Custom Paper Types & Sizes	Between 51mm - 215.9mm in width & 70mm - 297mm in length
Interpolated Scan Resolution	Up to 1,200 x 1,200 dpi (dots per inch)	Long Paper Scanning	Yes, up to 215.9mm wide & 863mm long (1 at a time)
Colour Depth	30-bit internal & 24-bit external	Business Card Scan Support	Yes (1 at a time)
Gray Scale	256 levels	Plastic Card Scan Support	Yes (1 at a time)
Supported File Formats	JPEG, TIFF, & PDF (standard, archive (PDF/A), searchable and password protected)	Receipt Scanning	Yes, with carrier sheet
Scan to USB	Scan directly to a USB flash memory drive, removing the requirement for a PC	<b>Duty Cycle</b>	
Scan to E-mail	Scan documents directly into your e-mail communications software	Maximum Daily	Up to 500 pages
Scan to E-mail Server	Scan documents directly to E-mail addresses via your E-mail server	<b>Weights &amp; Dimensions</b>	
Scan to OCR	Scan documents directly into your word processing application, e.g. Microsoft <sup>®</sup> Word, for instant editing	With Carton	380(W)x170(D)x207(H)mm 2.6KG
Scan to File	Scan directly to a file on your computer or network	Without Carton	285(W)x103(D)x84(H)mm 1.6KG
Scan to Image	Scan directly into your preferred image editing software	<b>Environment</b>	
Scan to Searchable PDF	Scan documents into a PDF file, which enables users to search for key words inside it	Power Consumption (Scanning)	14W
Scan To Network	Scan directly to a network folder (Windows <sup>®</sup> only)	Power Consumption (Ready)	4W
Scan to Mobile Devices	Scan directly to a mobile device with the Brother iPrint&Scan app	Power Consumption (Deep Sleep)	1.5W
Scan to Cloud	Scan to the following web services: Box, Dropbox, EVERNOTE <sup>®</sup> , Facebook, FLICKR <sup>®</sup> , Google Drive <sup>™</sup> , PICASA <sup>™</sup> & SkyDrive <sup>®</sup>	Power Consumption (Off)	0.25W
Scan to FTP	Scan directly to an FTP server	Sound Pressure Level (Active)	47dB or less
<b>Scanner Driver</b>		Sound Power Level (Active)	59dB or less
Windows <sup>®</sup>	ISIS <sup>2</sup> , TWAIN & WIA (Windows <sup>®</sup> 8, Windows <sup>®</sup> 7, Windows <sup>®</sup> Vista 32 & 64 bit versions & Windows <sup>®</sup> XP 32 bit versions)		
Macintosh	TWAIN & ICA (Mac OS X v10.6.8, v10.7.x, v10.8.x)		
Linux	SANE <sup>2</sup>		
Mobile Connectivity	IOS: iPrint&Scan Android: iPrint&Scan		

<sup>1</sup> Requires Presto!<sup>®</sup> PageManager<sup>®</sup> 9 SE or Nuance<sup>®</sup> PaperPort 12 that comes bundled with the machine, <sup>2</sup> Download from Brother solutions centre <http://solutions.brother.com>



**brother**  
at your side



facebook.com/brotheraustralia  
[www.brother.com.au](http://www.brother.com.au)